

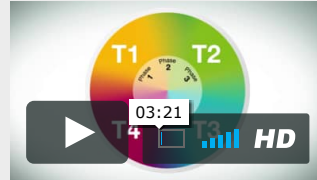


Training and tools for researchers like you.

Pathfinder

Overview

Clinical and translational research is characterized by a spectrum of activities where critical insights are passed between research modalities so that biomedical discoveries can lead to tangible improvements in human health. Explore the videos and interactive diagram to learn more.

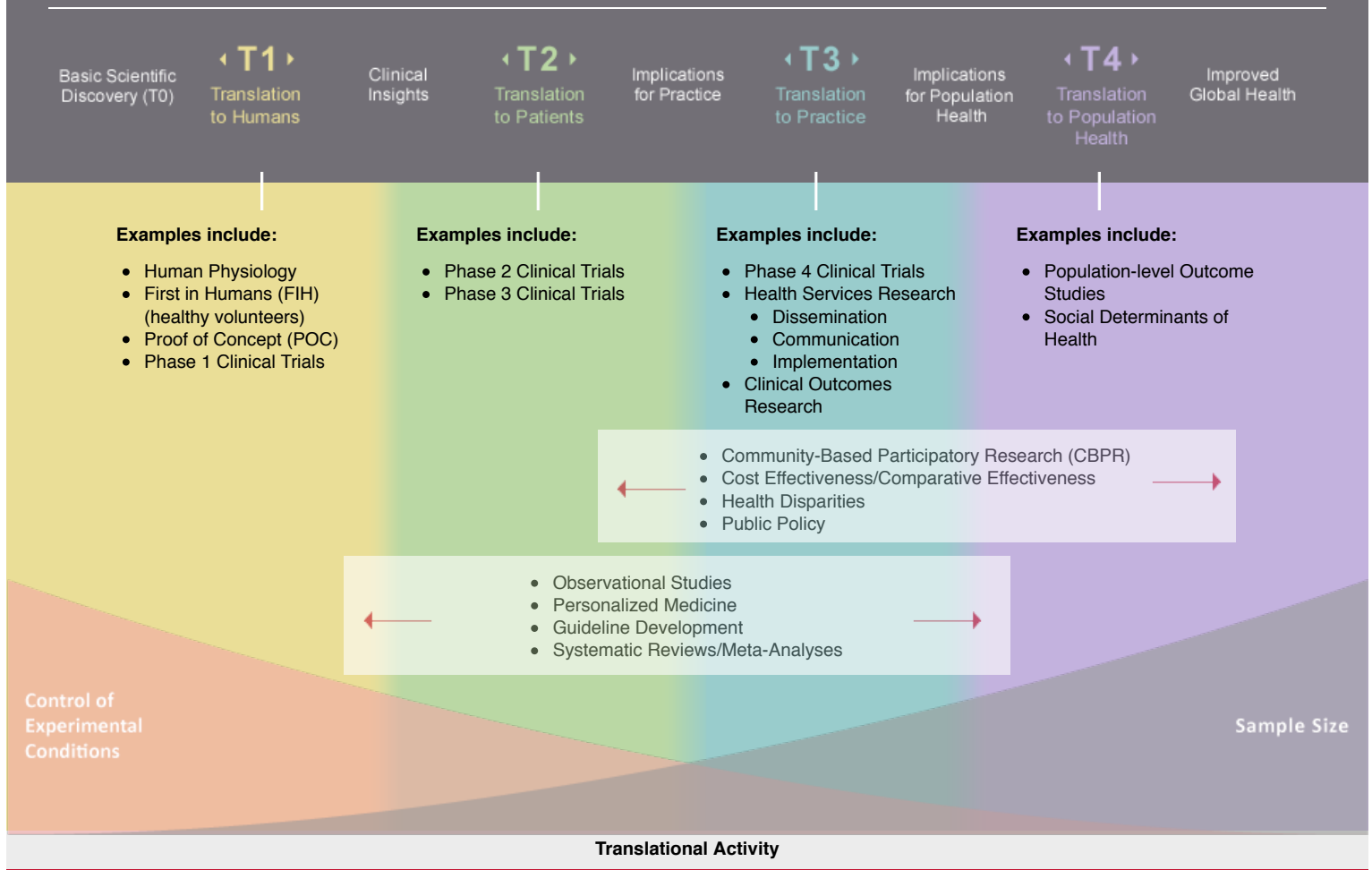


Understanding the Spectrum of Translational Research



Clinical & Translational Research Through the Diabetes Lens

Clinical and Translational Research Spectrum



References:

Pathfinder is based on material contained in the following three journal references.

Sung NS, Crowley WF Jr, Genel M, Salber P, Sandy L, Sherwood LM, et al. Central challenges facing the national clinical research enterprise. JAMA. 2003 Mar 12;289(10):1278-87. PubMed ID: [12633190](#)

Westfall JM, Mold J, Fagnan L. Practice-based research - "Blue Highways" on the NIH roadmap. JAMA. 2007 Jan 24;297(4):403-6. PubMed ID: [17244837](#)

Szilagyi PG. Translational research and pediatrics. Acad Pediatr. 2009 Mar-Apr;9(2):71-80. PubMed ID: [19329097](#)


Sponsoring Program

[Postgraduate Education in C/T Science Program](#)


See Also

- [Consulting & Advice](#)
- [Education & Training](#)
- [Funding](#)
- [People & Collaboration](#)
- [Research Resources](#)


[About Harvard Catalyst](#)
[National CTSA Consortium](#)
[Contact Us](#)

[News & Events](#) 
[Spotlights](#)

[Site Map](#)
[Supported Browsers](#)


Questions?
[Ask us »](#)


Newsletters
[Sign up here »](#)


Cite our support in
your publications
[Learn how »](#)

Copyright © 2017 by the President and Fellows of Harvard College

Funded by the NIH/NCATS Clinical and Translational Science Award (CTSA) program, grant number UL1TR001102, and through institutional support from Harvard University, Harvard Medical School, Harvard T.H. Chan School of Public Health, Beth Israel Deaconess Medical Center, Boston Children's Hospital, Brigham and Women's Hospital, Massachusetts General Hospital and the Dana Farber Cancer Institute.